

# *Caring for your* **Colorado Landscape**

*Brought to you by the experts at Swingle.*



## **In this issue...**

Preparing Your Landscape for Winter

Fun Fall Activities

Stages of Tree Fertilization

Benefits of Tree Trimming/Pruning

*And much more!*



## Tom's Talk

By Tom Talkacz, CEO

As the year comes to a close, we'd like to express our thanks and appreciation to our loyal customers and welcome those who've joined us this year.

This spring was one of the wettest on record, and Mother's Day celebrations were interrupted by an unexpected snow and ice storm, which damaged fragile plants just coming into bloom.

Regardless of the challenges, Colorado landscapes showed their resilience especially after the November Freeze of 2014. While not every tree and shrub survived, many did to the surprise of homeowners and landscape professionals alike. This is testament to the importance of making sure your landscape is well cared for and maintained throughout the year.

With winter right around the corner, remember that preparing in the fall ensures your landscape will be healthy and beautiful next spring. From protecting your irrigation system, to providing your lawn with beneficial nutrients to withstand winter's fury, we recommend reading the adjacent page to find out how best to prepare your landscape for winter and beyond.

Our experts are always available to evaluate your property to ensure it's healthy for you to enjoy throughout the year, so give us a call.

### Keeping the green side up!

Thomas R. Talkacz, CEO

## Did You Know?

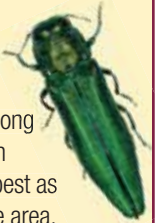
*4 out of 5 customers renew their Swingle services each year.*

## UPDATE

### Emerald Ash Borer

As expected, EAB continues to be found in new locations, but as of yet has not been detected outside of Boulder County.

Federal and local experts are surveying and sampling trees along the Front Range, in an effort to monitor the pest as it spreads through the area.

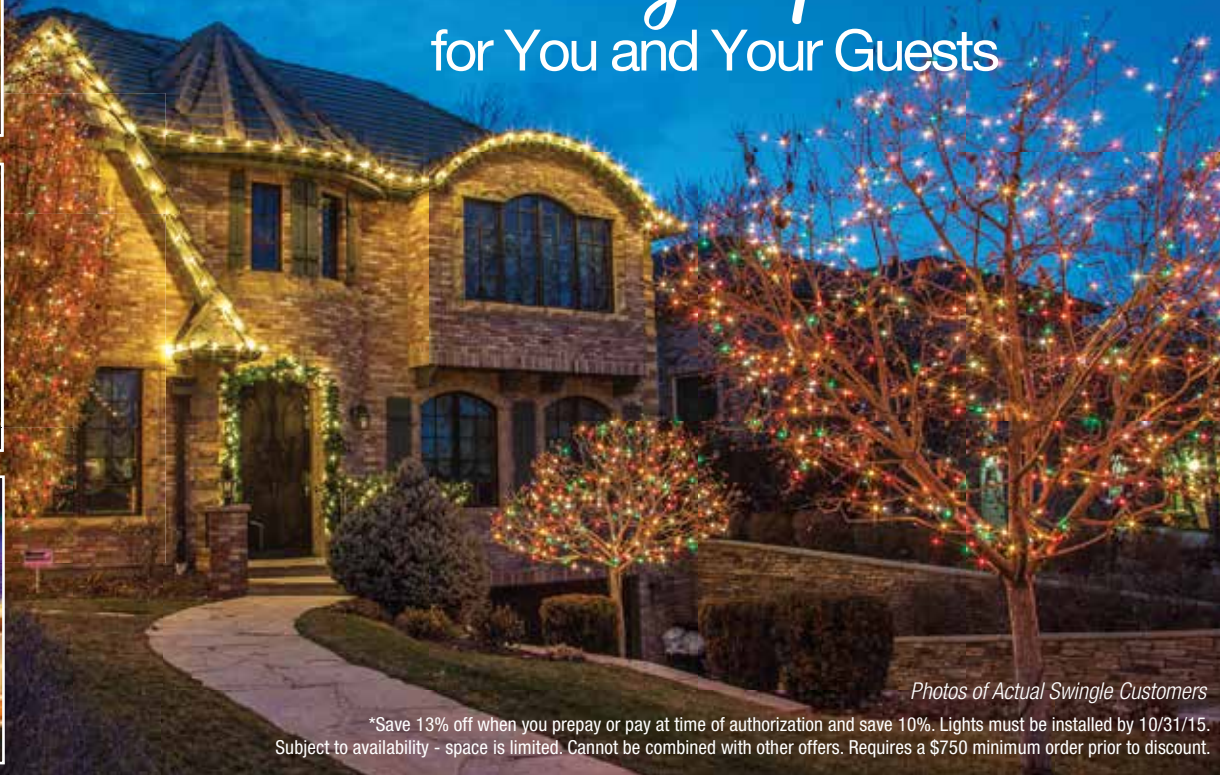


Multiple EAB management strategies exist. If you have an ash tree and have not determined your plan, please call to schedule a consultation with your Swingle Landscape Care Consultant and certified arborist.

**DON'T WAIT!**  
Or it will be too late.

Design & Installation | Take-Down & Storage | All-Season Maintenance

# An Extraordinary Experience for You and Your Guests



Photos of Actual Swingle Customers

\*Save 13% off when you prepay or pay at time of authorization and save 10%. Lights must be installed by 10/31/15. Subject to availability - space is limited. Cannot be combined with other offers. Requires a \$750 minimum order prior to discount.



# Ensuring Your Landscape is Ready for Winter

## Aeration

Give your lawn some breathing room as it transitions into the cooler season. Swingle's fall aeration breaks up the dry, compacted Colorado soil – allowing water and nutrients to penetrate to the roots.

## Overseeding

A formula for success is fall aeration and overseeding, which helps provide a thick, green, healthy lawn. It also helps make your lawn less susceptible to disease and weeds by introducing a variety of hardy grass types.

## Soil Conditioning

Proper lawn care means caring for your soil as well, especially in Colorado. Swingle's commercial-grade, organic soil conditioner will green-up your lawn and help eliminate brown spots.

## Tree Fertilization

Fall fertilization increases the productivity of soil, by increasing nutrient availability and encouraging root growth. Trees and shrubs with a healthy productive root system are far more likely to survive winter with fewer dead branches and increased spring growth.

## Lawn Fertilization & Weed Control

Swingle's custom blended fall fertilizer is designed for the unique demands of Colorado winters – boosting the health of your lawn and providing vital nutrients. In addition, our weed control treatment effectively keeps your lawn weed-free.

## Tree Trimming/Pruning

It's important to prune certain species during their dormant season in order to prevent the start of diseases, such as Fire Blight, which has been prevalent the last few years. It's also a great time to prune deciduous (leafy) trees, and it's the optimal time to prune overgrown evergreen and spruce.

On average, 10" of snow only equals 1" of water. Trees & shrubs need 3"- 4" per 30 days.



## Fall and Winter Watering

Traditionally, the driest months in Colorado are November through February. Your trees should be watered about every three to four weeks, as long as temperatures are above freezing. With Swingle's ReCharge™ supplemental watering, we only water when needed. If moisture levels are adequate (2 inches per 30 days) we hold off.

## Who else but Swingle would do that for you?

- Cover or store patio furniture and grills to protect them from the elements.
- Cut down perennials – this is also a good time to divide and plant elsewhere.
- Make sure storm drains point away from the house to prevent ice build up.
- Clay and fragile planters should be moved indoors to prevent cracking.
- Drain garden hoses and store them inside to prevent damage.
- Turn outdoor faucets off inside your home – leave the outside open to drain excess water.
- Inspect outdoor lighting for dead bulbs and dirty lenses. A well-lit property prevents slips and falls on icy surfaces.

**PROPERTY** *Check List*

Preparing your landscape this fall will save you time and money next spring.



## IRRIGATION



### Irrigation systems need winterization protection as the weather turns cold

Water removal from sprinkler systems, prior to the colder months, **can save thousands of dollars in damage and stress to homeowners.**

Come late fall, make sure your home's outdoor irrigation system is properly cleared of water, turned off and protected from freezing temperatures.

*Contact Swingle today to schedule your service!  
Not available in all areas.*

## Fertilization During the Stages of a Tree's Life

With all the stages of a plant's life, it's important to understand that with every passing stage the tree or shrub will need different nutrients to maintain their beauty and health. **We recommend different treatments for all three-stages of a tree or shrub's lifespan.** These treatments will change over time as your trees and shrubs naturally age.

1

### First 4:

A fertilization treatment specifically formulated to increase root development for newly-planted trees and shrubs. The "First 4" treatment is a great way to establish and promote long lasting health during this stage. This treatment is recommended once a year for the first four years after transplanting. After becoming established, your plants will transition into the next stage of fertilization.

2

### Root Builder:

A fertilization treatment which is specifically formulated for established trees and shrubs. "Root Builder" provides the necessary nutrients to enrich the soil for healthy structural growth to help your trees and shrubs flourish. This treatment is recommended once a year until the plant develops into its mature stage, which can take many years depending on the plant's growing process.

3

### Root Builder Mature:

A root building and root enhancing formulation designed specifically to encourage active root growth in your mature trees and shrubs. This fertilization treatment is recommended once a year to maintain the beauty and health of your trees and shrubs throughout their mature life.

Sub-surface fertilization is key for mature trees and shrubs.

Call Swingle today for all your tree fertilization needs.



# Festivals & Activities

Fall 2015

## The Benefits of Pruning/Trimming Your Trees:

- ✔ Reduce the risk of breakage
- ✔ Prepare for seasonal snow storms
- ✔ Encourage healthy, new growth
- ✔ Increase resistance to damaging disease and insects
- ✔ Improve the value of your property
- ✔ Improve the aesthetics of your outdoor space

“Excessive moisture this year means we’ll have a lot of new growth. Pruning will be a must for many trees and shrubs.”



**Tony Hahn**  
Landscape Care Consultant  
Certified Arborist

The “voice of Swingle”, as seen on our local Colorado TV stations.



**FACT:**  
In 2014, a Swiss gardener grew the world’s heaviest pumpkin weighing **2,096.6 pounds**

Colorado in the fall is filled with activities for everyone to enjoy. Here’s just a sampling of some of our favorites:

### Denver Oktoberfest - September 18-20 & 25-27

Typical fests are largely about beer, but downtown Denver’s autumnal celebration ([thedenveroktoberfest.com](http://thedenveroktoberfest.com)) provides fun for the entire family with a daschund derby, costume contests, food booths, polka dancing, and live music.

### Elk Fest - October 3-4

([visitestespark.com/events-calendar/special-events/elk-fest](http://visitestespark.com/events-calendar/special-events/elk-fest)) Every October, spectators head to Estes Park to experience the elk gathering at the edge of Rocky Mountain National Park to show off for females during the start of the rutting (breeding) season.

### Cider Days - October 3-4

Celebrating Lakewood’s agricultural heritage with an entertaining mix of live performances, activities and tasty harvest treats, Cider Days offers fun and excitement for the entire family! This year’s event will again include tractor pulls and vintage power displays, wagon and barrel train rides along with other children’s activities, historic demonstrations as well as a unique variety of exhibitors and vendors. ([lakewood.org/CiderDays](http://lakewood.org/CiderDays))

### Pumpkin Festival - October 9-11

Denver Botanic Gardens at Chatfield ([botanicgardens.org/pumpkin-festival/about](http://botanicgardens.org/pumpkin-festival/about)) celebrates fall with a three-day event for the entire family. Select from a wide variety of pumpkins in the massive pumpkin patch (prices vary by size). Entry includes pumpkin carving demonstrations; hay, pony and barrel train rides; mini maze; jumping pillow; carnival game tickets; face painting and live music.

### Fall Fest - October 17-18

The Fort Collins Fall Fest ([visitfortcollins.com/events/fort-collins-fall-fest](http://visitfortcollins.com/events/fort-collins-fall-fest)) is a seasonal celebration featuring visual art, high quality handmade items, and affordable art from a plethora of local and regional artists. You will have the opportunity to meet and talk with the artists, dine in a patio café, enjoy live musical performances, and entertain your family.

### Boo At The Zoo - Late October

(Check their website for further details - [denverzoo.org/events/boo-zoo](http://denverzoo.org/events/boo-zoo)) The 31st annual Boo At The Zoo offers more than 25 trick-or-treat stations, creepy crawlly animal demonstrations, and exciting family-friendly entertainment under the canopy of the beautiful fall foliage of Denver Zoo.

### U-Pick-Em Pumpkins - October/November

Rock Creek Farm in Broomfield ([rockcreekfarm.com](http://rockcreekfarm.com)) and Anderson Farms in Erie ([andersonfarms.com](http://andersonfarms.com)) provide acres of fields filled with bright, orange pumpkins ready for picking. In addition, you’ll find family fun activities such as mazes, games, rides and more!

For more information, visit [colorado.com/events](http://colorado.com/events)



Will your property be ready for winter?  
Free **Property Check List** inside

# Happy With Your Lawn?

If not, Swingle's fall services can help



## Fall Lawn Services

- 1 Fertilization & Weed Control:** Provides your lawn with vital nutrients formulated to help it thrive in our Colorado climate, while keeping weeds out.
- 2 Aeration:** Breaks up the dry, compacted Colorado soil, allowing water and nutrients to reach the roots.
- 3 Overseed:** Thickens your lawn and reduces the risk of disease by introducing a variety of hardy grass types.
- 4 Revive®:** Conditions your soil and helps increase water penetration, while promoting root development and eliminating brown spots.

\*Residential only - some restrictions may apply.

FREE Landscape Evaluation from one of our experts! Call **303.337.6200** or **970.221.1287**